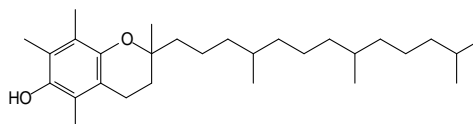
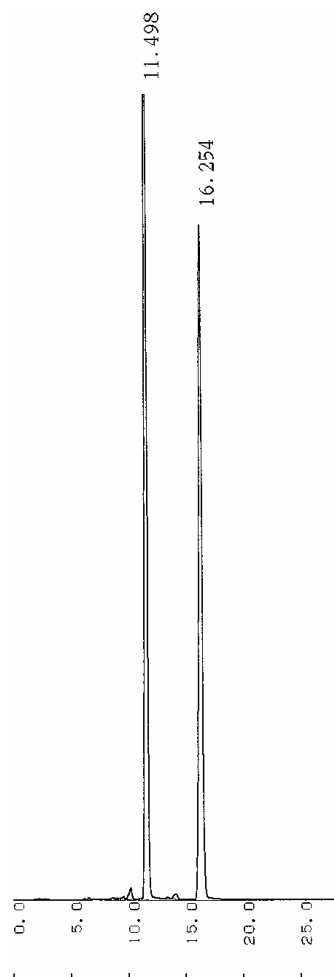
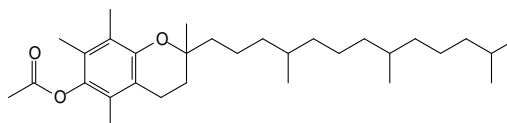


食品関連化合物

トコフェロール (Tocopherol)



-トコフェロール
(-Tocopherol)



酢酸 -トコフェロール
(-Tocopherol acetate)

Column : SUMIPAX ODS D-210SLP (3 μ m, 4.6mm \times 150mm)
Mobile phase : methanol / water (98/2)
Flow rate : 1.0 mL/min
Pressure : 7.0 MPa
Temperature : 30
Detector : UV 284nm
Injection : 20 μ L (1mg/mL respectively, methanol)