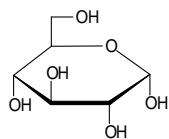
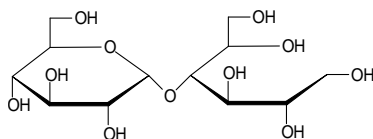


食品関連化合物

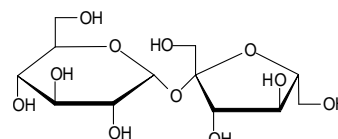
糖類 (Sugars)



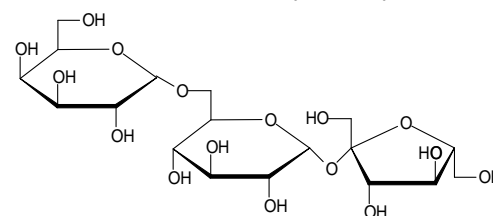
グルコース
(Glucose)



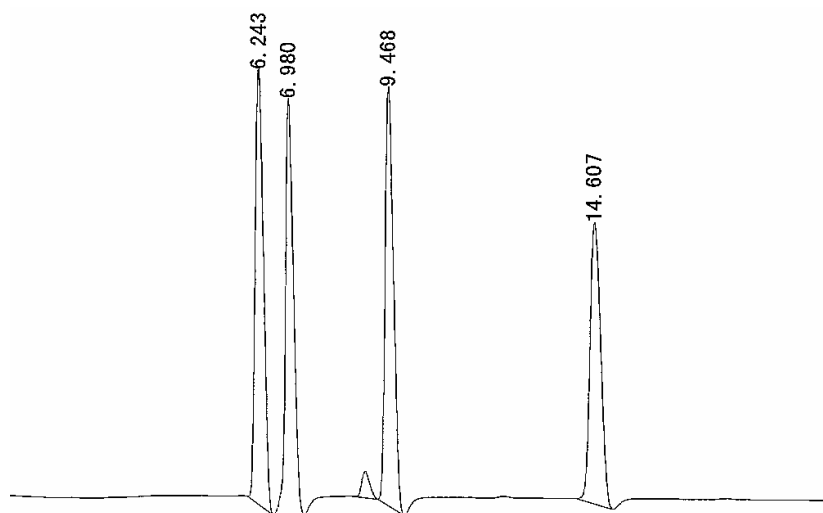
マルチトール
(Maltitol)



スクロース
(Sucrose)



ラフィノース
(Raffinose)



Column : SUMIPAX ODS D-210SLP (3 μ m, 4.6mm \times 250mm)
Mobile phase : water
Flow rate : 0.5 mL/min
Pressure : 8.3 MPa
Temperature : 25
Detector : RI
Injection : 5 μ L (2.5mg/mL respectively, water)