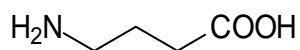
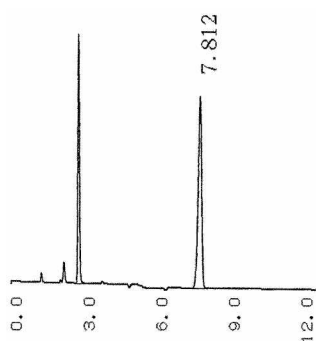


# 食品関連化合物

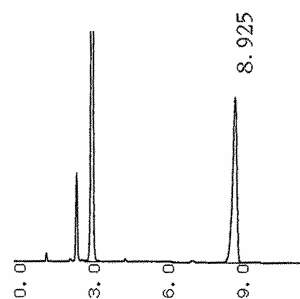
## GABA ( $\gamma$ -aminobutyric acid )



GABA



SUMIPAX ODS A-217(5  $\mu$ m)



SUMIPAX ODS D-210SLP(3  $\mu$ m)

Column : 4.6mm  $\times$  150mm

Mobile phase : 5mM sodium 1-hexanesulfonate + phosphoric acid (pH 2.5)  
/ acetonitrile (97/3)

Flow rate : 1.0 mL/min

Temperature : 25

Detector : UV 210nm

Injection volume : 5  $\mu$ L (2mg/mL, mobile phase)