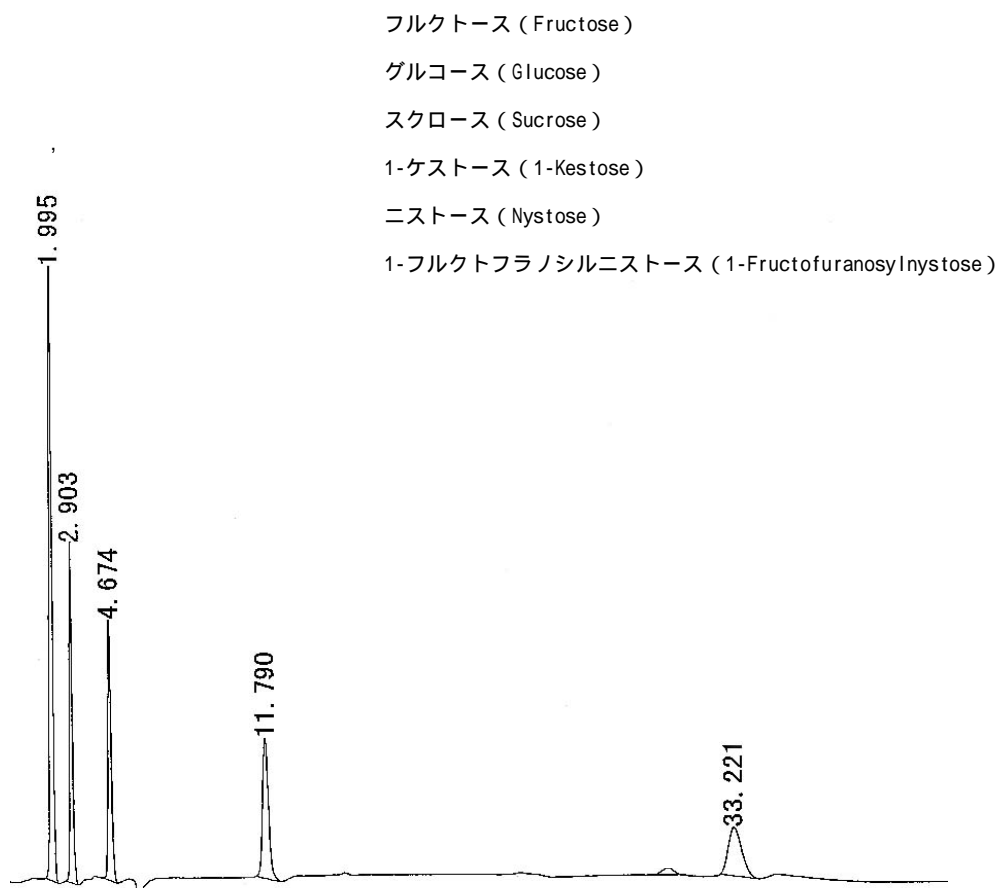


# 食品関連化合物

## フルクトオリゴ糖 (Fructooligosaccharides)



Column : SUMIPAX ODS D-210SLP (3 $\mu$ m, 4.6mm  $\times$  150mm)  
Mobile phase : water  
Flow rate : 1.0 mL/min  
Pressure : 10.5 MPa  
Temperature : 25  
Detector : RI  
Injection : 5  $\mu$ L (1mg/mL respectively, water)