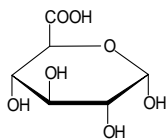
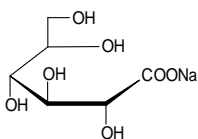


食品関連化合物

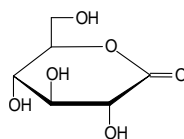
糖誘導体 (Derivatives of Glucose)



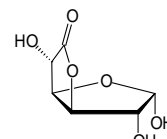
グルクロン酸
(Gluconolactone)



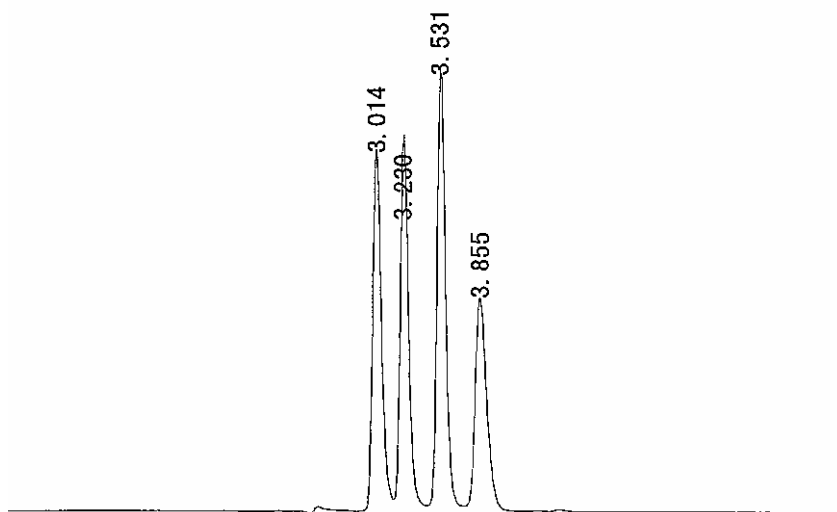
グルコン酸 Na
(Sodium gluconate)



グルコノラクトン
(Gluconolactone)



グルクロノラクトン
(Glucuronolactone)



Column : SUMIPAX ODS D-210SLP (3 μ m, 4.6mm \times 250mm)
Mobile phase : phosphoric acid aq. (pH 2.5)
Flow rate : 1.0 mL/min
Pressure : 17.0 MPa
Temperature : 25
Detector : UV 210nm
Injection : 1 μ L (10mg/mL respectively, water)