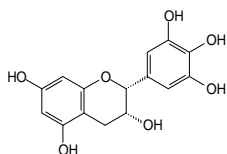
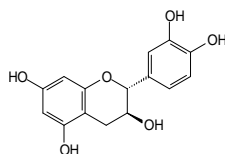


食品関連化合物

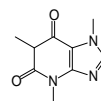
カテキン (Catechin)



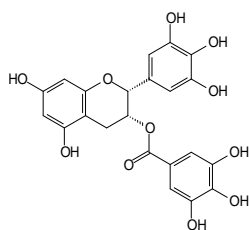
エピガロカテキン
(Epigallocatechin)



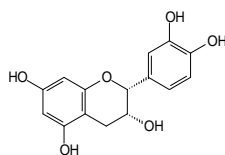
カテキン
(Catechin)



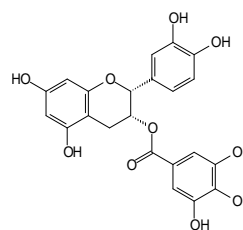
カフェイン
(Caffeine)



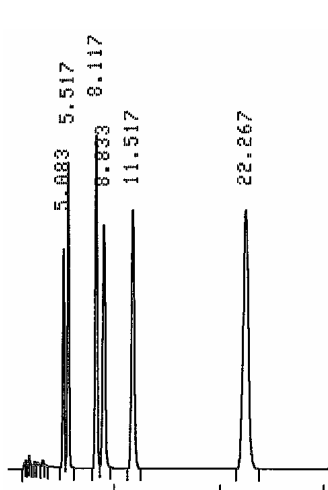
エピガロカテキンガレート
(Epigallocatechin gallate)



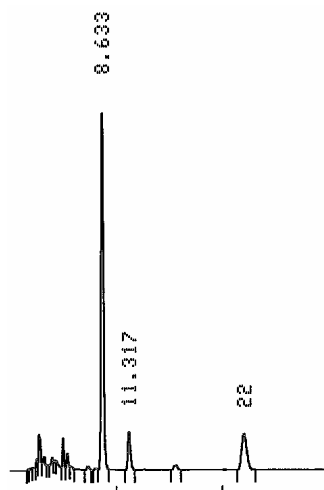
エピカテキン
(Epicatechin)



エピカテキンガレート
(Epicatechin gallate)



標品



緑茶抽出物

Column : SUMIPAX ODS D-210SLP (3 μ m, 4.6mm \times 100mm)
 Mobile phase : phosphoric acid aq. (pH 2.5) / methanol (75/25)
 Flow rate : 0.8 mL/min
 Temperature : 25
 Detector : UV 280nm
 Injection volume : 0.25 ~ 2 μ g (water)