

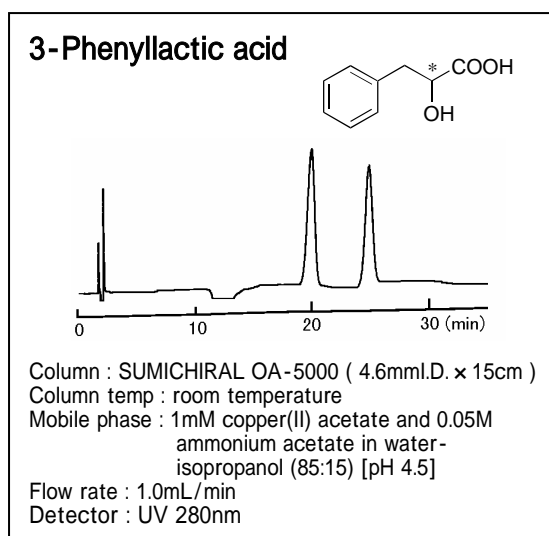
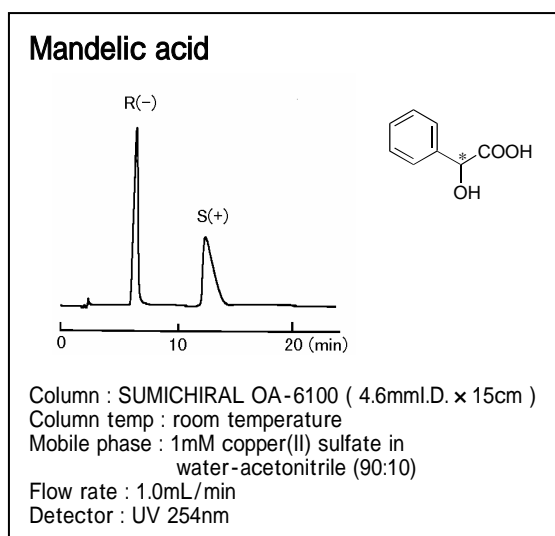
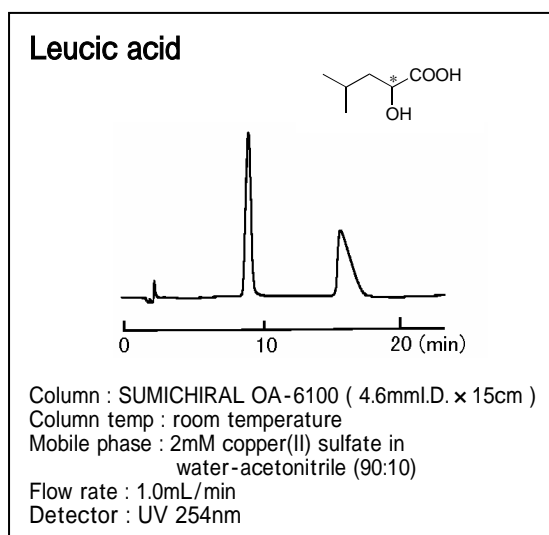
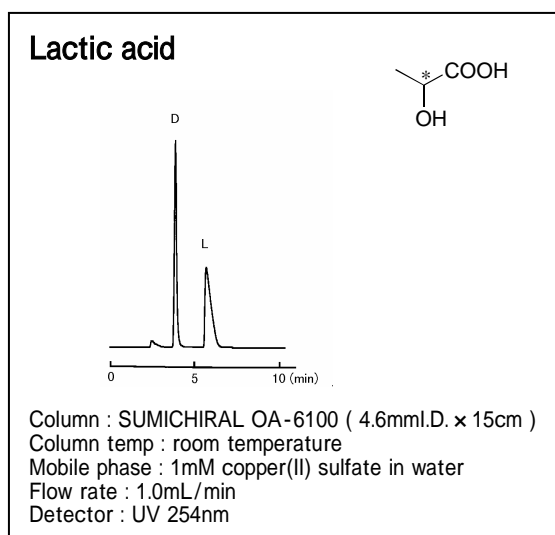
## SUMICHIRAL TECHNICAL NEWS

( Vol. 9 8 0 8 )

### Enantiomer Separation of Hydroxy Acids by SUMICHIRAL OA

SUMICHIRAL OA-5000 and OA-6100 are chiral ligand exchange HPLC columns, and these columns are extremely effective for direct enantiomer separation of a wide range of amino acids and hydroxy acids. We already reported on the separation of amino acid enantiomers. (*SUMICHIRAL TECHNICAL NEWS, Vol.9709 and Vol.9712*)

In this Technical News report, we highlight several chiral separations of hydroxy acids. Please call for information about your specific application.

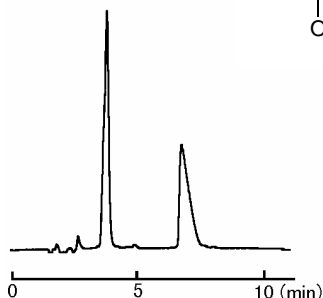
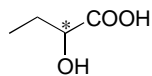


3-1-135, Kasugade-naka, Konohanaku, Osaka, 554-0022, Japan

Fax + 81 6 466 5255

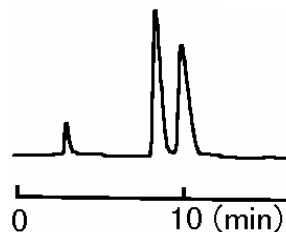
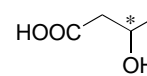
**SUMIKA CHEMICAL ANALYSIS SERVICE, Ltd.**  
**Scientific Instruments Div. Chromatography Group**

**2-Hydroxybutyric acid**



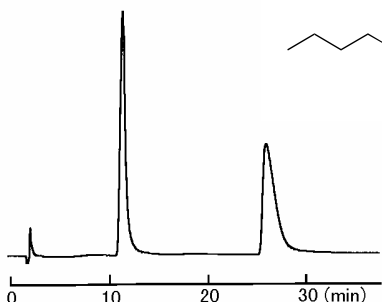
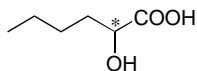
Column : SUMICHIRAL OA-6100 ( 4.6mmI.D. x 15cm )  
 Column temp : room temperature  
 Mobile phase : 2mM copper(II) sulfate in  
 water-acetonitrile (98:2)  
 Flow rate : 1.0mL/min  
 Detector : UV 254nm

**3-Hydroxybutyric acid**



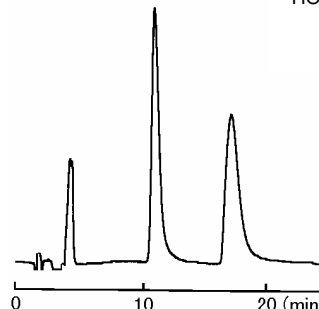
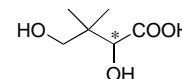
Column : SUMICHIRAL OA-6100 ( 4.6mmI.D. x 15cm )  
 Column temp : room temperature  
 Mobile phase : 1mM copper(II) sulfate in water  
 Flow rate : 1.0mL/min  
 Detector : UV 254nm

**2-Hydroxyhexanoic acid**



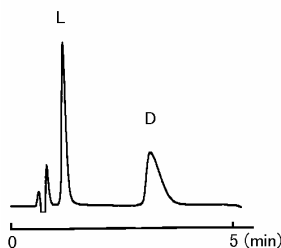
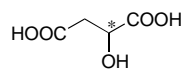
Column : SUMICHIRAL OA-6100 ( 4.6mmI.D. x 15cm )  
 Column temp : room temperature  
 Mobile phase : 2mM copper(II) sulfate in  
 water-acetonitrile (90:10)  
 Flow rate : 1.0mL/min  
 Detector : UV 254nm

**Pantoic acid**



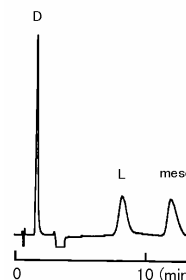
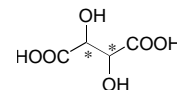
Column : SUMICHIRAL OA-5000 ( 4.6mmI.D. x 15cm )  
 Column temp : room temperature  
 Mobile phase : 2mM copper(II) sulfate in  
 water-isopropanol (90:10)  
 Flow rate : 1.0mL/min  
 Detector : UV 254nm

**Malic acid**



Column : SUMICHIRAL OA-5000 ( 4.6mmI.D. x 5cm )  
 Column temp : room temperature  
 Mobile phase : 1mM copper(II) acetate and 0.1M  
 ammonium acetate in water-  
 isopropanol (85:15) [pH 4.5]  
 Flow rate : 1.0mL/min  
 Detector : UV 280nm

**Tartaric acid**



Column : SUMICHIRAL OA-5000 ( 4.6mmI.D. x 5cm )  
 Column temp : room temperature  
 Mobile phase : 1mM copper(II) acetate and 0.05M  
 ammonium acetate in water-  
 isopropanol (85:15) [pH 4.5]  
 Flow rate : 1.0mL/min  
 Detector : UV 280nm